



El Paso Electric Company

Solar PV Program 2012 program overview

Wednesday, November 2, 2012

Meeting Agenda

- 2011 Program Status Update
(Steve Wiese and Anne Jensen)
- 2012 Program Changes and Clarifications
(Steve Wiese and Anne Jensen)
- Rate 48 Options
(Curtis Hutcheson, Mgr, Economic and Rate Research)
- EPE Processes
(Roberto Favela, Mgr, DRG Interconnection)
- Program Wrap-Up
(Evan Evans, VP, Regulatory Services and Rates)

2011 Update

- Funds committed to projects in 2011 must complete by November 30, 2011
- 2011 unspent incentive funds do not roll-over to the 2012 program
- 2011 Program is now closed to new applications (as of October 31st)
- But, the 2012 program is open as of November 1

Program Year 2011

El Paso

Budget Status

A. Current Budget

B. Requested (In Queue)

C. Reserved

D. Paid

kW-dc installed

Avg. \$/watt incentive

E. Available to Reserve (A-C-D)

	City-Res	City-Non-Res	EPE	Total
A. Current Budget	\$450,000	\$450,000	\$450,000	\$1,350,000
B. Requested (In Queue)	\$0	\$0	\$57,580	\$57,580
C. Reserved	\$138,890	\$141,628	\$338,098	\$618,615
D. Paid	\$310,676	\$125,143	\$107,220	\$543,038
kW-dc installed	155.338	62.010	55.386	272.734
Avg. \$/watt incentive	\$2.00	\$2.02	\$1.94	\$1.99
E. Available to Reserve (A-C-D)	\$434	\$183,230	\$4,683	\$188,347

Budget Status

Req+Res+Paid as % of Budget

Res+Paid as % of Budget

Paid as % of Budget

	City-Res	City-Non-Res	EPE	Total
Req+Res+Paid as % of Budget	100%	59%	112%	90%
Res+Paid as % of Budget	100%	59%	99%	86%
Paid as % of Budget	69%	28%	24%	40%

Application Process Status

Accepting Applications

Approving Applications

Incentive Level for New Approvals

	City-Res	City-Non-Res	EPE
Accepting Applications	No	No	No
Approving Applications	No	No	No
Incentive Level for New Approvals	\$2.00	\$1.75	\$2.00/\$1.75

2012 Program

- Began accepting new applications for 2012 funding on November 1
- 2012 incentive budget = \$1,150,000
 - \$450,000 City Res (res or non-res projects in El Paso City Limits only)
 - \$450,000 City Non-Res (non-res projects in El Paso City Limits)
 - \$250,000 in EPE funds (available to any eligible project in EPE's Texas service area)
- Incentive levels will remain unchanged from their 2011 levels
 - \$2.00/watt-dc for residential projects
 - \$1.75/watt-dc for non-residential projects.

2012 Program

- Incentive reservation limits
 - \$87,500 for non-res projects (50 kW-dc, increased from 25 kW-dc)
 - \$20,000 for res projects (10 kW, same as 2011)
- Maximum incentive per service provider/project owner
 - 50% of the total incentive budget (increased from 40% of available budget in each budget category)
- “Open season” to begin on July 1
 - Service Provider and Customer limits will not be enforced. Incentive reservation limits will continue to be 50kw for non-residential and 10 kW for residential.
- Additional clarifying language added to guidebook
 - Free ridership, new construction projects, EPE's interconnection process and contacts, and expiration dates.

2012 Program

- Review changes to Program Guidebook and Forms
- Review expectations regarding Final Application Form (FAF) submission

Rate 48 Monthly Rate

➤ Curtis Hutcheson

Mgr, Economic and Rate Research



Rate 48 Monthly Rate

- Method A, for installations less than 100 kW
 - Customer Charge - \$15.00
 - Energy Payment at the lesser of cost of fuel and purchased power or avoided cost
 - Current Fixed Fuel Factor - \$0.027429
 - Current avoided cost - \$0.04260



Rate 48 Metering Options

Customers with a design capacity less than 100 kW have the following metering options:

➤ Option A

- Metering separately measures NET consumption and NET production
- NET consumption energy billed under applicable rate
- NET production energy purchased by EPE under Method A

➤ Option B

- Metering separately measures total consumption and total production through 2 meters
- Total consumption billed under applicable rate
- Total production energy paid under Method A

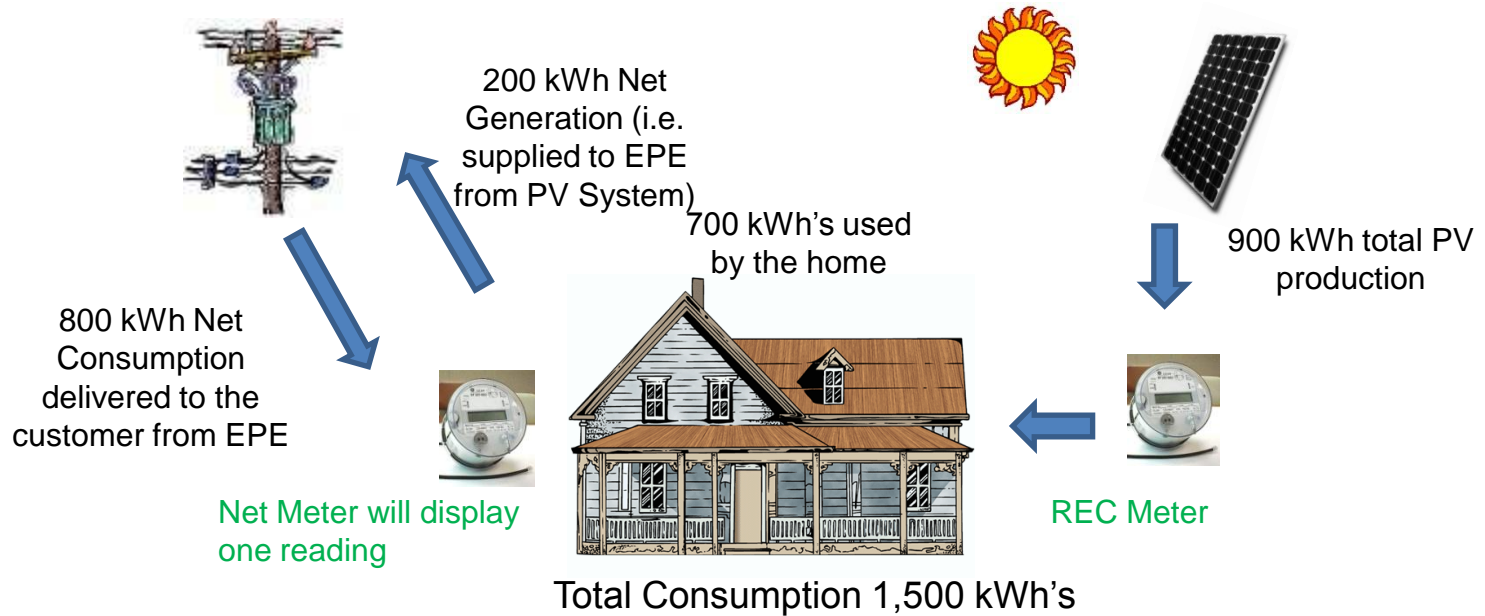
OR,

Rate 48 Metering Options

Customers with a design capacity less than 100 kW have the following metering options:

- If less than 50 kW, can have rollback net metering if production of the system is less than;
 - The owner's estimated annual consumption for a new house or apartment, or
 - The amount of electricity the owner consumed in the year before installation of the system
- Measured net consumption billed under the standard tariff
- Measured net production purchased under Method A, but will not be assessed monthly customer charge

Rollback Net Meter



Consumption Measured by Typical Meter without Renewable Generation, kWh

1,500

¹ Total Energy Generated, kWh	900
² Net Production, Energy Received, kWhR	200
³ Net Consumption, Energy Delivered, kWhD	800
Total Energy Consumption, kWh 1-2+3	1,500

Customer will be billed for 600 kWh consumption under Residential Service

Rollback Net Metering

- Residential Customers will default to rollback net metering unless they specify to EPE otherwise
- Commercial customers will default to the current rate they are on unless they specify to EPE otherwise

EPE Interconnection Process

- Roberto Favela
Mgr, DRG Interconnection

EPE Interconnection Process

- Corporate Development Department
 - ❖ Initial point of contact for all renewable Interconnection projects
 - ❖ Please mail all Interconnection requests to:
Corporate Development Department
El Paso Electric (Loc. 131)
P.O. Box 982
El Paso Texas 79960

Key Contacts

Incentive Program Staff

Steve Wiese

Clean Energy Associates

(800) 381-6552 x101

steve.wiese@cleanenergyassociates.com

Anne Castello-Jensen

Frontier Associates

(512) 372-8778 x127

acastello@frontierassoc.com

Cece Hyslop

Clean Energy Associates

(800) 381-6552 x103

cece@cleanenergyassociates.com

El Paso Electric Staff

Derek Pearson

PV Incentive Coordinator (TX only)

915-521-4468

derek.pearson@epelectric.com

Roberto Favela

Interconnection Agreements (TX and NM)

915-521-4418

roberto.favela@epelectric.com

